

WHITE HORSE TEST REPORTS

DIMENSIONS AND SURFACE QUALITY	PORCELAIN TILES - GROUP BIa		PHYSICAL PROPERTIES	PORCELAIN TILES - GROUP BIa		CHEMICAL PROPERTIES	PORCELAIN TILES - GROUP BIa	
	ISO 13006 Standard	White Horse Tiles (Test Result By SIRIM)		ISO 13006 Standard	White Horse Tiles (Test Result By SIRIM)		ISO 13006 Standard	White Horse Tiles (Test Result By SIRIM)
Length and Width	+0.6% / ±2.0mm (Non-Rectified) +0.3% / ±1.0mm (Rectified)	Passed	Water Absorption	Maximum 0.5%	Passed	Chemical Resistance To Household Chemical Of Glazed Tiles	Class GA(V): No visible effect Class GB(V): Definite change in appearance	No visible effect GA(V)
Thickness	±5% / ± 0.5mm	Passed	Breaking Strength	Not Less Than 1300N		Chemical Resistance To Swimming Pool Salts Of Glazed Tiles	Class GC(V): Partial or complete loss of the original surface Minimum Class GB(V)	
Straightness of Sides	+0.5% / ±1.5mm (Non-Rectified) +0.3% / ±0.8mm (Rectified)	Passed	Modulus of Rupture	Minimum 35N/mm ²	Class 3	Chemical Resistance To Hydrochloric Acid (3%) Of Glazed Tiles	Class GLA(V): No visible effect	No visible effect GLA(V)
Rectangularity	+0.5% / ±2.0mm (Non-Rectified) +0.3% / ±1.5mm (Rectified)	Passed	Resistance to Deep Abrasion of Unglazed Tiles	NIL		Chemical Resistance To Citric Acid (100g/l) Of Glazed Tiles	Class GLB(V): Definite change in appearance	
Flatness of Surface	+0.5% / ±2.0mm (Non-Rectified) +0.4% / ±1.8mm (Rectified)	Passed	Resistance to Surface Abrasion of Glazed Tiles	Class 3: For normal footwear with small amounts of scratching dirt. Class 4: For regular traffic with some scratching dirt.	Class 3	Chemical Resistance To Potassium Hydroxide (30g/l) Of Glazed Tiles	Class GLC(V): Partial or complete loss of the original surface	Passed
Centre Curvature						Staining Resistance Test Of Glazed Tiles	Minimum Class 3	
Edge Curvature								
Warpage								
Surface Quality	A minimum of 95% free from visible defects	Passed	Crazing Resistance	No Crazing Observed	Passed			

SHADE & TONALITIES

<p>V1 UNIFORM FROM TILE TO TILE</p> <p>V1 Colour range and tonality within the same shade is fairly uniform from tile to tile. Minimal to zero difference among tiles from the same production run.</p>	<p>V2 SLIGHTLY NOTICEABLE FROM TILE TO TILE</p> <p>V2 Colour range and tonality within the same shade is slightly noticeable from tile to tile. Visibly distinguished difference in design or pattern with minimal change in colour tones.</p>	<p>V3 MODERATELY NOTICEABLE FROM TILE TO TILE</p> <p>V3 Colour range and tonality within the same shade is moderately noticeable from tile to tile. Visibly distinguished difference in design or pattern.</p>	<p>V4 DISTINCTLY NOTICEABLE FROM TILE TO TILE</p> <p>V4 Colour range and tonality within the same shade is distinctly noticeable from tile to tile. Random colour differences from tile to tile create the possibility of unique tile compositions.</p>
---	--	--	---

- The accuracy of colours shown in this brochure is as close as the printing process will allow.
- The appearance of tiles featured in this brochure may differ from the actual items sold.
- The pictures are only illustrative of the tile combinations.
- All tiles are packed in accordance with the standard packing list. For special orders and custom sizes, tile products will be custom-packed based on quality and specification requested.
- White Horse Ceramic Industries Sdn. Bhd. reserves the right to amend the colour range or specifications of tiles at any time without notice.



WHITE HORSE
CERAMIC

WHITE HORSE CERAMIC INDUSTRIES SDN. BHD.

(Co. No. 216824-X)

📍 PLO 464, Jln Gangsa, Zone 11, Pasir Gudang Industrial Estate, 81700 Pasir Gudang, Johor, Malaysia.

☎ (607)253 5300

☎ (607)251 8855

✉ whcib@whitehorse.com.my

🌐 www.whitehorse.com.my

Scan QR Code



ISO 9001:2015
MFR 104-104-11010

CERTIFIED
Management System

ISO 14001:2015
MFR 104-104-11010

EN 290-2486 (2012)
www.enfocert.com.cn

EN 14411-2012
For Internal Ratings

SGS

CERT NO:MY97/09994

CERT NO:MY13/04375

MS

2010-2020

2010-2020

JAN 2024
CERS300001

Porcelain STONE & GRANITE 300mm X 300mm Tiles

Ultimate Quality,
Timeless Design



WHITE HORSE
CERAMIC



ANTICO SERIES *Porcelain Stone Tiles*

300mm x 300mm **M** Matt Finish, Glazed



H30506 **M** (15 Designs)

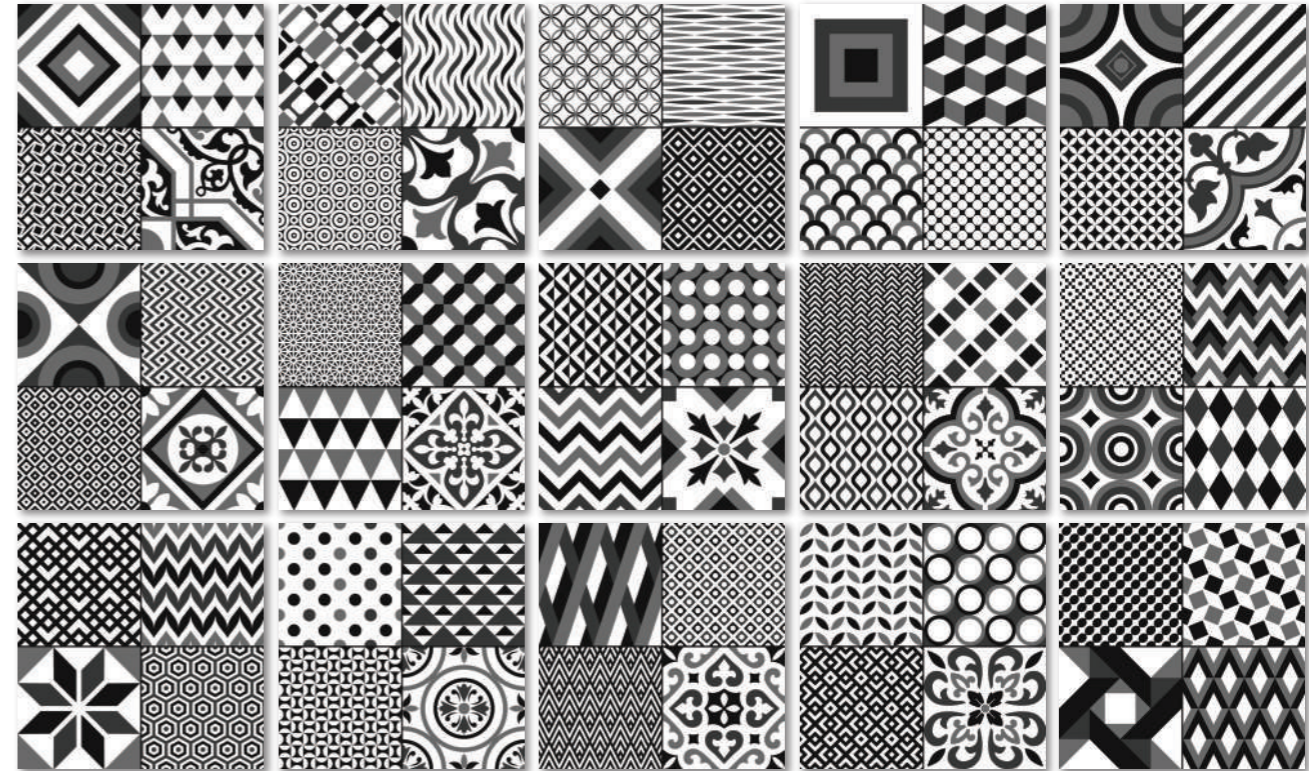
Disclaimer: While we work to ensure that all tiles under this series are correct and consistent in design, on occasion, each tile packaging of 15 tiles may feature a random design that may be different than that shown in our brochure. As this tile series offers 15 random design combinations, the manufacturer assumes no liability for inaccuracies or misstatements about our tile products.

SIZE	CARTON			PALLET		
	pcs	m ²	kg	ctns	m ²	kg
300mm x 300mm	15	1.35	24.45	78	105.30	1,930.10



ESTETICO SERIES *Porcelain Stone Tiles*

300mm x 300mm **M** Matt Finish, Glazed



H30505 **M** (15 Designs)

Disclaimer: While we work to ensure that all tiles under this series are correct and consistent in design, on occasion, each tile packaging of 15 tiles may feature a random design that may be different than that shown in our brochure. As this tile series offers 15 random design combinations, the manufacturer assumes no liability for inaccuracies or misstatements about our tile products.

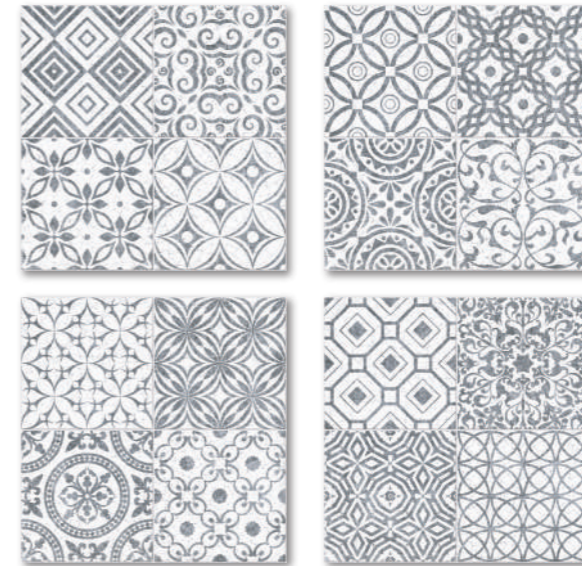
SIZE	CARTON			PALLET		
	pcs	m ²	kg	ctns	m ²	kg
300mm x 300mm	15	1.35	24.45	78	105.30	1,930.10



H30502 H63104

MOTIVO SERIES *Porcelain Stone Tiles*

300mm x 300mm **M** Matt Finish, Glazed



H30502 **M** (4 Designs)

Disclaimer: While we work to ensure that all tiles under this series are correct and consistent in design, on occasion, each tile packaging of 15 tiles may feature a random design that may be different than that shown in our brochure. As this tile series offers 4 random design combinations, the manufacturer assumes no liability for inaccuracies or misstatements about our tile products.

SIZE	CARTON			PALLET		
	pcs	m ²	kg	ctns	m ²	kg
300mm x 300mm	15	1.35	24.45	78	105.30	1,930.10



H30501

MOROCCAN SERIES *Porcelain Stone Tiles*

300mm x 300mm **M** Matt Finish, Glazed



H30501 **M** (4 Designs)

Disclaimer: While we work to ensure that all tiles under this series are correct and consistent in design, on occasion, each tile packaging of 15 tiles may feature a random design that may be different than that shown in our brochure. As this tile series offers 4 random design combinations, the manufacturer assumes no liability for inaccuracies or misstatements about our tile products.

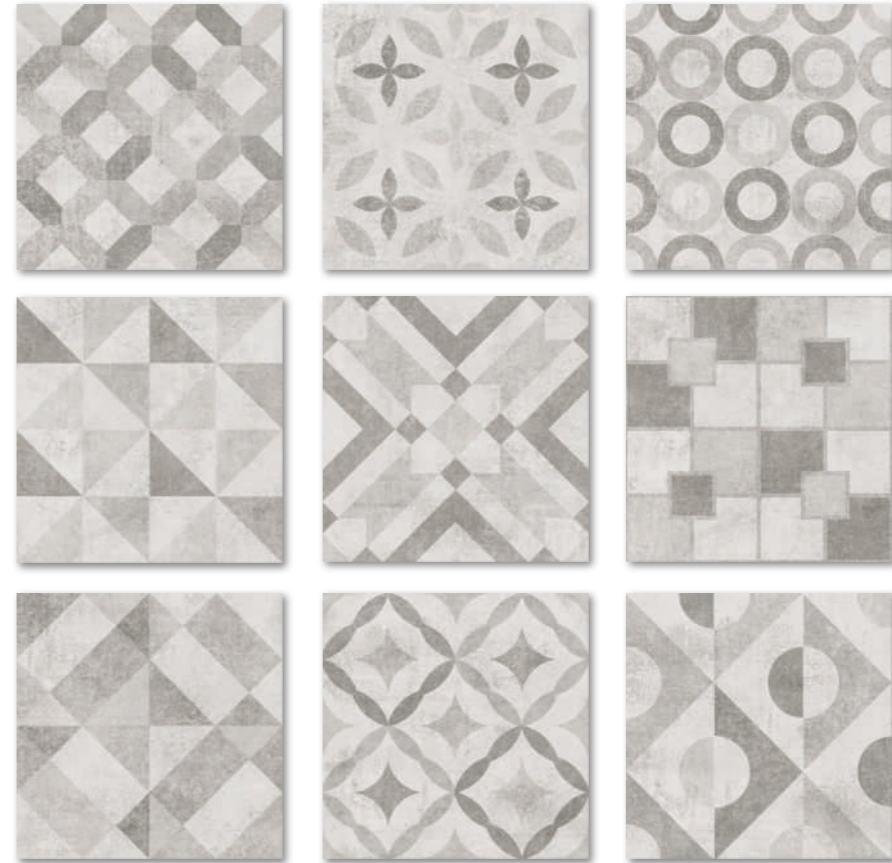
SIZE	CARTON			PALLET		
	pcs	m ²	kg	ctns	m ²	kg
300mm x 300mm	15	1.35	24.45	78	105.30	1,930.10



H30500

MODELLO SERIES *Porcelain Stone Tiles*

300mm x 300mm **M** Matt Finish, Glazed



H30500 **M** (9 Designs)

Disclaimer: While we work to ensure that all tiles under this series are correct and consistent in design, on occasion, each tile packaging of 15 tiles may feature a random design that may be different than that shown in our brochure. As this tile series offers 9 random design combinations, the manufacturer assumes no liability for inaccuracies or misstatements about our tile products.

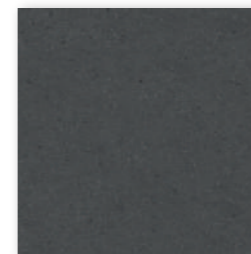
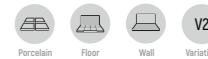
SIZE	CARTON			PALLET		
	pcs	m ²	kg	ctns	m ²	kg
300mm x 300mm	15	1.35	24.45	78	105.30	1,930.10



H30256

COSTIERO SERIES *Porcelain Stone Tiles*

300mm x 300mm **M** Matt Finish, Glazed



H30252 **M**



H30255 **M**



H30256 **M**

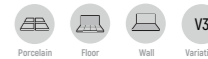
SIZE	CARTON			PALLET		
	pcs	m ²	kg	ctns	m ²	kg
300mm x 300mm	15	1.35	24.45	78	105.30	1,930.10



FLOOR WALL H30184

MONTES SERIES *Porcelain Stone Tiles*

300mm x 300mm **M** Matt Finish, Glazed



NEW!



H30182 **M**



H30183 **M**



H30184 **M**

SIZE	CARTON			PALLET		
	pcs	m ²	kg	ctns	m ²	kg
300mm x 300mm	15	1.35	24.45	78	105.30	1,930.10



H30153

AVANOS SERIES *Porcelain Stone Tiles*

300mm x 300mm **S** Structure Finish, Glazed



H30153 **S**



H30154 **S**

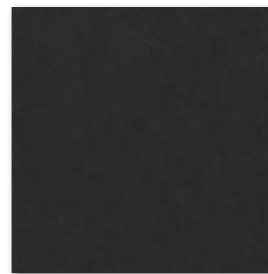
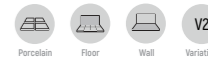
SIZE	CARTON			PALLET		
	pcs	m ²	kg	ctns	m ²	kg
300mm x 300mm	15	1.35	24.45	78	105.30	1,930.10



H30044

SUCINTO SERIES *Porcelain Stone Tiles*

300mm x 300mm **M** Matt Finish, Glazed



H30041 **M**



H30043 **M**



H30044 **M**



H30045 **M**



H30047 **M**



H30049 **M**

SIZE	CARTON			PALLET		
	pcs	m ²	kg	ctns	m ²	kg
300mm x 300mm	15	1.35	24.45	78	105.30	1,930.10



GRAVINA SERIES *Porcelain Stone Tiles*

300mm x 300mm **S** Structure Finish, Glazed



H30026 **S**



H30027 **S**

SIZE	CARTON			PALLET		
	pcs	m ²	kg	ctns	m ²	kg
300mm x 300mm	15	1.35	24.45	78	105.30	1,930.10



MSE30005

ETERNO SERIES *Porcelain Stone Tiles*

300mm x 300mm **S** Structure Finish, Glazed



MSE3001 **S**



MSE3002 **S**



MSE3003 **S**



MSE3004 **S**



MSE3005 **S**



MSE3006 **S**



MSE3010 **S**

SIZE	CARTON			PALLET		
	pcs	m ²	kg	ctns	m ²	kg
300mm x 300mm	15	1.35	23.55	78	105.30	1,859.90



HN30237

SEATTLE STONE SERIES *Porcelain Granite Tiles*

300mm x 300mm **S** Structure Finish, Glazed



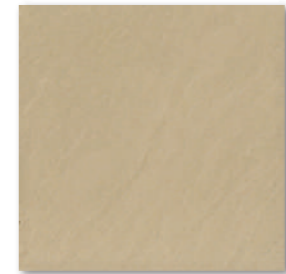
HN30230 **S**



HN30235 **S**



HN30236 **S**



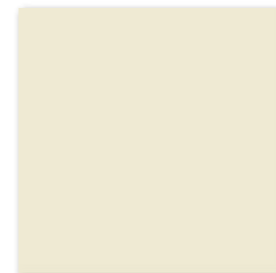
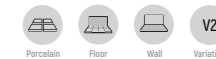
HN30237 **S**

SIZE	CARTON			PALLET		
	pcs	m ²	kg	ctns	m ²	kg
300mm x 300mm	15	1.35	23.81	78	105.30	1,880.18



COLOUR CHART

80mm x 200mm & 300mm x 300mm **M** Matt Finish, Glazed, **G** Gloss Finish, Glazed.



01



11



12



13



20

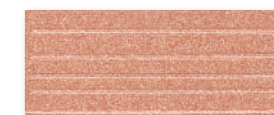


28



40 * Special Colour

STEP NOSING



8cm x 20cm

SIZE	SURFACE	01	11	12	13	20	28	37	40	51
8CM X 20CM	MATT M		•	•	•	•		•		
30CM X 30CM	MATT M	•	•	•	•	•	•	•	•	•
30CM X 30CM	GLOSS G		•		•			•		•

SIZE	CARTON			PALLET		
	pcs	m ²	kg	ctns	m ²	kg
80mm x 200mm (M)	50	0.80	14.00	100	80.00	1,422.00
300mm x 300mm (G)	15	1.35	24.40	78	105.30	1,926.00
300mm x 300mm (M)	15	1.35	23.60	78	105.30	1,863.80