

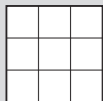
WHITE HORSE TEST REPORTS

DIMENSIONS AND SURFACE QUALITY	PORCELAIN TILES - GROUP BIa		PHYSICAL PROPERTIES	PORCELAIN TILES - GROUP BIa		CHEMICAL PROPERTIES	PORCELAIN TILES - GROUP BIa	
	ISO 13006 Standard	White Horse Tiles (Test Result By SIRIM)		ISO 13006 Standard	White Horse Tiles (Test Result By SIRIM)		ISO 13006 Standard	White Horse Tiles (Test Result By SIRIM)
Length and Width	+0.6% / ±2.0mm (Non-Rectified) +0.3% / ±1.0mm (Rectified)	Passed	Water Absorption	Maximum 0.5%	Passed	Chemical Resistance To Household Chemical Of Glazed Tiles	Class GA(V): No visible effect Class GB(V): Definite change in appearance	No visible effect 6A(V)
Thickness	±5% / ± 0.5mm	Passed	Breaking Strength	Not Less Than 1300N		Chemical Resistance To Swimming Pool Salts Of Glazed Tiles	Class GC(V): Partial or complete loss of the original surface Minimum Class GB(V)	
Straightness of Sides	+0.5% / ±1.5mm (Non-Rectified) +0.3% / ±0.8mm (Rectified)	Passed	Modulus of Rupture	Minimum 35N/mm ²	Class 3	Chemical Resistance To Hydrochloric Acid (3%) Of Glazed Tiles	Class GLA(V): No visible effect	No visible effect 6A(V)
Rectangularity	+0.5% / ±2.0mm (Non-Rectified) +0.3% / ±1.5mm (Rectified)	Passed	Resistance to Deep Abrasion of Unglazed Tiles	NIL		Chemical Resistance To Citric Acid (100g/l) Of Glazed Tiles	Class GLB(V): Definite change in appearance	
Flatness of Surface	+0.5% / ±2.0mm (Non-Rectified) +0.4% / ±1.8mm (Rectified)	Passed	Resistance to Surface Abrasion of Glazed Tiles	Class 3: For normal footwear with small amounts of scratching dirt. Class 4: For regular traffic with some scratching dirt.	Class 3	Chemical Resistance To Potassium Hydroxide (30g/l) Of Glazed Tiles	Class GLC(V): Partial or complete loss of the original surface	No visible effect 6A(V)
Centre Curvature						Staining Resistance Test Of Glazed Tiles	Minimum Class 3	
Edge Curvature						Passed	Passed	
Warpage	A minimum of 95% free from visible defects	Passed	Crazing Resistance	No Crazing Observed	Passed			

Porcelain STONE 600mm X 600mm Tiles

SHADE & TONALITIES

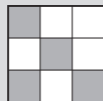
V1 UNIFORM
FROM TILE TO TILE



V1

Colour range and tonality within the same shade is fairly uniform from tile to tile. Minimal to zero difference among tiles from the same production run.

V2 SLIGHTLY NOTICEABLE
FROM TILE TO TILE



V2

Colour range and tonality within the same shade is slightly noticeable from tile to tile. Visibly distinguished difference in design or pattern with minimal change in colour tones.

V3 MODERATELY NOTICEABLE
FROM TILE TO TILE



V3

Colour range and tonality within the same shade is moderately noticeable from tile to tile. Visibly distinguished difference in design or pattern.

V4 DISTINCTLY NOTICEABLE
FROM TILE TO TILE



V4

Colour range and tonality within the same shade is distinctly noticeable from tile to tile. Random colour differences from tile to tile create the possibility of unique tile compositions.

- The accuracy of colours shown in this brochure is as close as the printing process will allow.
- The appearance of tiles featured in this brochure may differ from the actual items sold.
- The pictures are only illustrative of the tile combinations.
- All tiles are packed in accordance with the standard packing list. For special orders and custom sizes, tile products will be custom-packed based on quality and specification requested.
- White Horse Ceramic Industries Sdn. Bhd. reserves the right to amend the colour range or specifications of tiles at any time without notice.

WHITE HORSE CERAMIC INDUSTRIES SDN. BHD.
(Co. No. 216824-X)

PLO 464, Jln Gangsa, Zone 11, Pasir Gudang Industrial Estate, 81700 Pasir Gudang, Johor, Malaysia.

(607)253 5300

(607)251 8855

whcisb@whitehorse.com.my

www.whitehorse.com.my

Scan QR Code



JULY 2023
CHS000001



WHITE HORSE
CERAMIC



80 0990 0000
MPS 110-104-111040

CERTIFIED
to ISO 9001:2015

ISO 29001:2018
www.whitehorse.com.my

EN 14411-1:2012
For internal floorings

放射性水平 A 类

CERT NO: SG97/09994

CERT NO: MY13/04375

SGS
CERTIFIED TO ISO 9001:2015
CONFORMANCE BY SIRIM

2010-2020

2010-2021

*Ultimate Quality,
Timeless Design*



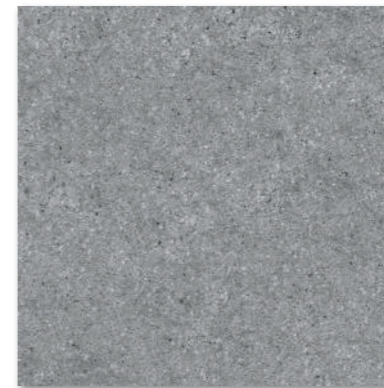
WHITE HORSE
CERAMIC



H60105

COSTIERO SERIES

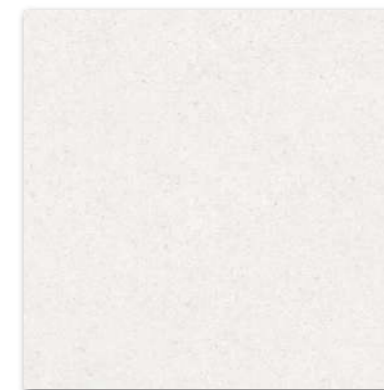
600mm x 600mm **M** Matt Finish, Glazed, **R** Rectified



H60102 **M** **R**



H60105 **M** **R**



H60106 **M** **R**

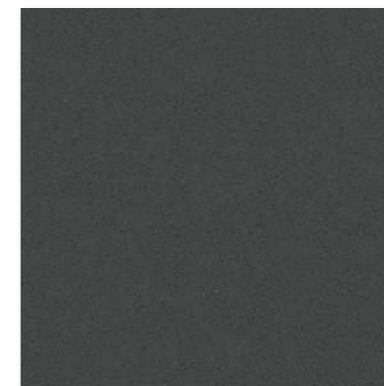
SIZE	CARTON			PALLET		
	pcs	m ²	kg	ctns	m ²	kg
600mm x 600mm	4	1,44	32,43	40	57,60	1,320,20



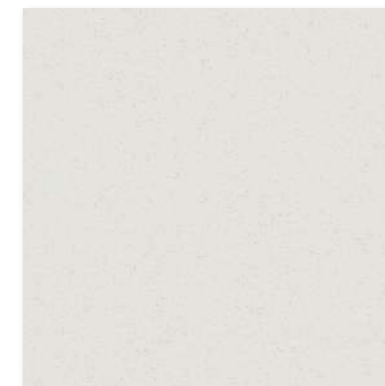
H60101

NOVELA SERIES

600mm x 600mm **M** Matt Finish, Glazed, **R** Rectified



H60098 **M** **R**



H60101 **M** **R**

SIZE	CARTON			PALLET		
	pcs	m ²	kg	ctns	m ²	kg
600mm x 600mm	4	1.44	32.43	40	57.60	1,320.20

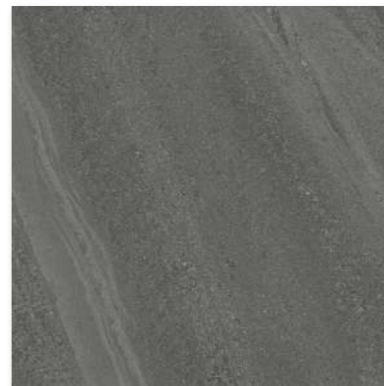


MONTES SERIES

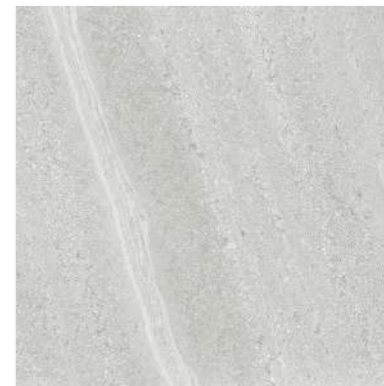
600mm x 600mm **M** Matt Finish, Glazed, **R** Rectified



NEW!



H60092 **M** **R**



H60093 **M** **R**



H60094 **M** **R**

H60093

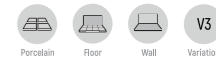
SIZE	CARTON			PALLET		
	pcs	m ²	kg	ctns	m ²	kg
600mm x 600mm	4	1.44	32.43	40	57.60	1,320.20



H60089

SILTSTONE SERIES

600mm x 600mm **M** Matt Finish, Glazed, **R** Rectified



H60089 **M** **R**

SIZE	CARTON			PALLET		
	pcs	m ²	kg	ctns	m ²	kg
600mm x 600mm	4	1.44	32.43	40	57.60	1,320.20



H60088

BIANCO SERIES

600mm x 600mm **M** Matt Finish, Glazed, **R** Rectified



H60088 **M** **R**

SIZE	CARTON			PALLET		
	pcs	m ²	kg	ctns	m ²	kg
600mm x 600mm	4	1.44	32.43	40	57.60	1,320.20



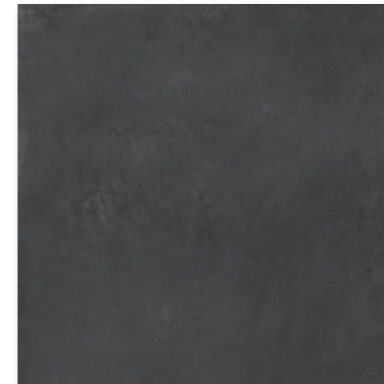
H60044

FINO SERIES

600mm x 600mm **M** Matt Finish, Glazed, **R** Rectified



NEW!



H60042 **M** **R**



H60043 **M** **R**



H60044 **M** **R**

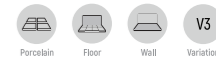
SIZE	CARTON			PALLET		
	pcs	m ²	kg	ctns	m ²	kg
600mm x 600mm	4	1.44	32.43	40	57.60	1,320.20



H60048

CEMENTO SERIES

300mm x 600mm, 600mm x 600mm **M** Matt Finish, Glazed, **R** Rectified



H60048 **M** **R**

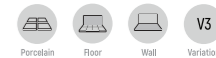
SIZE	CARTON			PALLET		
	pcs	m ²	kg	ctns	m ²	kg
600mm x 600mm	4	1.44	32.43	40	57.60	1,320.20
300mm x 600mm	8	1.44	29.40	72	103.68	2,139.80



HD66001 JLD68001

LOOS SERIES

180mm x 600mm, 600mm x 600mm **M** Matt Finish, Glazed, **R** Rectified



HD66001 **M** **R**



JLD68001 **M** **R**
180x600mm



HD66004 **M** **R**



JLD68004 **M** **R**
180x600mm

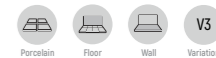
SIZE	CARTON			PALLET		
	pcs	m ²	kg	ctns	m ²	kg
600mm x 600mm	4	1,4400	32,68	40	57,60	1,330,20
180mm x 600mm	8	0,8640	20,09	80	69,12	1,630,20



H60074

FILO SERIES

300mm x 600mm, 600mm x 600mm **M** Matt Finish, Glazed, **R** Rectified



H60074 **M** **R**
600x600mm



H60076 **M** **R**
600x600mm

H63076 **M**
300x600mm



H60077 **M** **R**
600x600mm

H63077 **M**
300x600mm

SIZE	CARTON			PALLET		
	pcs	m ²	kg	ctns	m ²	kg
600mm x 600mm	4	1.44	32.43	40	57.60	1,320.20
300mm x 600mm	8	1.44	29.40	72	103.68	2,139.80



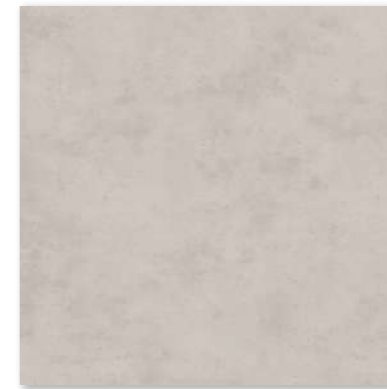
H66004

ROSATO SERIES

150mm x 300mm, 150mm x 600mm, 600mm x 600mm **M** Matt Finish, Glazed, **R** Rectified



H66001 **M** **R**



H66004 **M** **R**

SIZE	CARTON			PALLET		
	pcs	m ²	kg	ctns	m ²	kg
600mm x 600mm	4	1.44	32.43	40	57.60	1,320.20
150mm x 600mm	8	0.72	15.74	80	57.60	1,282.20
150mm x 300mm	16	0.72	15.74	90	64.80	1,439.60