

Porcelain

STONE

300mm X 600mm

Tiles

NOV 2020
CLP5630001



WHITE HORSE
CERAMIC

WHITE HORSE CERAMIC INDUSTRIES SDN. BHD.

(Co. No. 216824-X)

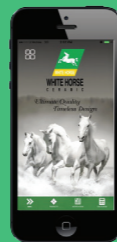
📍 PLO 464, Jln Gangsa, Zone 11, Pasir Gudang Industrial Estate,
81700 Pasir Gudang, Johor, Malaysia.

☎ (607)253 5300

☎ (607)251 8855

✉ whcisb@whitehorse.com.my

🌐 www.whitehorse.com.my



Download White Horse
Ceramic App NOW!

Scan QR Code



*Ultimate Quality,
Timeless Design*



WHITE HORSE
CERAMIC



HQ63031

1

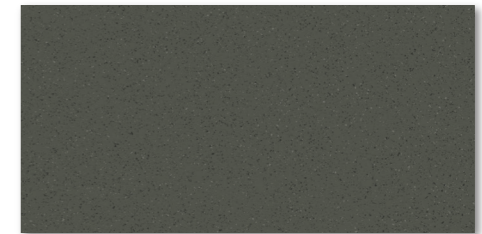
NOVELA SERIES

300mm x 600mm **M** Matt Finish, Glazed, **R** Rectified

-  Porcelain
-  Floor
-  Wall
-  V2
Variation



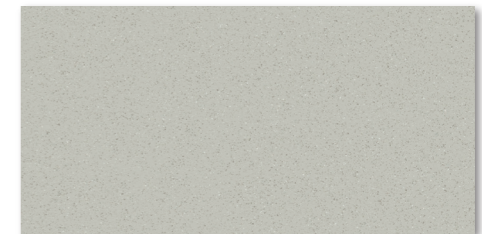
HQ63028 **M** **R**



HQ63029 **M** **R**



HQ63030 **M** **R**



HQ63031 **M** **R**

SIZE	CARTON			PALLET		
	pcs	m ²	kg	ctns	m ²	kg
300mm x 600mm	8	1.44	29.40	72	103.68	2,139.80

2



COSTIERO SERIES

300mm x 600mm **M** Matt Finish, Glazed, **R** Rectified

-  Porcelain
-  Floor
-  Wall
-  V2
Variation



HQ63024 **M** **R**



HQ63025 **M** **R**



HQ63026 **M** **R**

SIZE	CARTON			PALLET		
	pcs	m ²	kg	ctns	m ²	kg
300mm x 600mm	8	1.44	29.40	72	103.68	2,139.80



HQ63021

PRIMOROSO SERIES

300mm x 600mm **M** Matt Finish, Glazed, **R** Rectified

-  Porcelain
-  Floor
-  Wall
-  V3 Variation



HQ63021 **M** **R**



HQ63022 **M** **R**



HQ63023 **M** **R**

SIZE	CARTON			PALLET		
	pcs	m ²	kg	ctns	m ²	kg
300mm x 600mm	8	1.44	29.40	72	103.68	2,139.80



BENE SERIES

300mm x 600mm **S** Structure Finish, Glazed

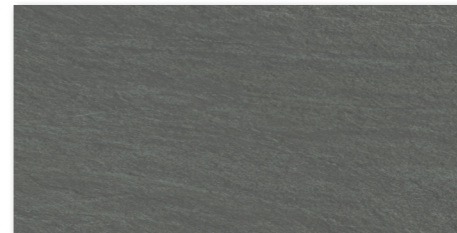
-  Porcelain
-  Floor
-  Wall
-  V2 Variation



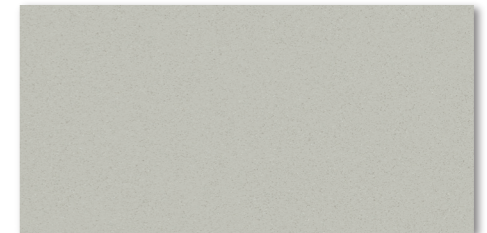
H63131/H63131W **S**



H63132/H63132W **S**



H63133/H63133W **S**



H63134/H63134W **S**

SIZE	CARTON			PALLET		
	pcs	m ²	kg	ctns	m ²	kg
300mm x 600mm	8	1.44	29.40	72	103.68	2,139.80



H63125

COSTIERO SERIES

300mm x 600mm **M** Matt Finish, Glazed, **F** Full Body

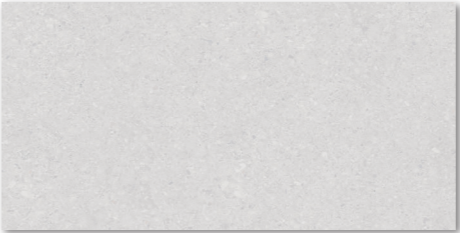
-  Porcelain
-  Floor
-  Wall
-  V2 Variation



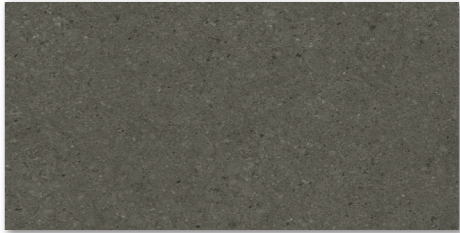
H63122 **M** **F**



H63125 **M** **F**



H63126 **M** **F**



H63130 **M** **F**

SIZE	CARTON			PALLET		
	pcs	m ²	kg	ctns	m ²	kg
300mm x 600mm	8	1.44	29.40	72	103.68	2,139.80



H63118

11

HORMIGON SERIES

300mm x 600mm **S** Structure Finish, Glazed

-  Porcelain
-  Floor
-  Wall
-  V3 Variation



H63118 **S** (6 Designs)

SIZE	CARTON			PALLET		
	pcs	m ²	kg	ctns	m ²	kg
300mm x 600mm	8	1.44	29.40	72	103.68	2,139.80

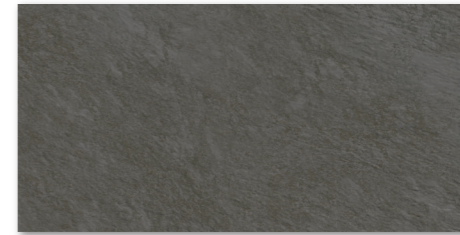


H63115

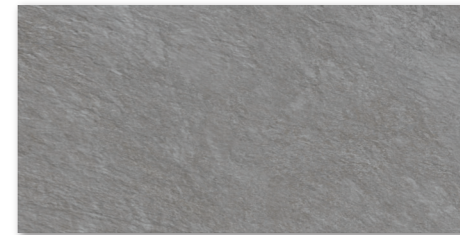
ESCOLLO SERIES

300mm x 600mm **S** Structure Finish, Glazed

-  Porcelain
-  Floor
-  Wall
-  V3 Variation



H63114 **S**



H63115 **S**

SIZE	CARTON			PALLET		
	pcs	m ²	kg	ctns	m ²	kg
300mm x 600mm	8	1.44	29.40	72	103.68	2,139.80



H631112

SILTSTONE SERIES

300mm x 600mm **M** Matt Finish, Glazed

-  Porcelain
-  Floor
-  Wall
-  V3 Variation



H63110 **M**



H63112 **M**

SIZE	CARTON			PALLET		
	pcs	m ²	kg	ctns	m ²	kg
300mm x 600mm	8	1.44	29.40	72	103.68	2,139.80



H63108 H30501

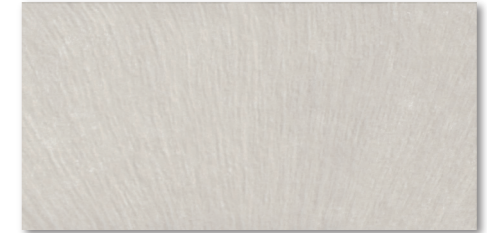
CALIDO SERIES

300mm x 600mm **S** Structure Finish, Glazed

-  Porcelain
-  Floor
-  Wall
-  V2 Variation



H63107 **S**



H63109 **S**

RECOMMENDED MATCHING TILES

MOROCCAN SERIES **M** Matt Finish, Glazed



H30501 **M** (4 Designs)
300X300mm

SIZE	CARTON			PALLET		
	pcs	m ²	kg	ctns	m ²	kg
300mm x 600mm	8	1.44	29.40	72	103.68	2,139.80
300mm x 300mm	15	1.35	24.45	78	105.30	1,859.90



CALIDO SERIES

300mm x 600mm **S** Structure Finish, Glazed

-  Porcelain
-  Floor
-  Wall
-  V2 Variation



H63101 **S**



H63105 **S**

RECOMMENDED MATCHING TILES

ESTETICO SERIES **M** Matt Finish, Glazed



H30505 **M** (15 Designs)
300X300mm

SIZE	CARTON			PALLET		
	pcs	m ²	kg	ctns	m ²	kg
300mm x 600mm	8	1.44	29.40	72	103.68	2,139.80
300mm x 300mm	15	1.35	24.45	78	105.30	1,859.90



H63093 H63095

CELULA SERIES

300mm x 600mm **M** Matt Finish, Glazed

-  Porcelain
-  Floor
-  Wall
-  V3
Variation



H63093 **M**



H63094 **M**



H63095 **M**



H63096 **M**

SIZE	CARTON			PALLET		
	pcs	m ²	kg	ctns	m ²	kg
300mm x 600mm	8	1.44	29.40	72	103.68	2,139.80



BOSQUE SERIES

300mm x 600mm **M** Matt Finish, Glazed

-  Porcelain
-  Floor
-  Wall
-  V3
Variation



H63089 **M**



H63090 **M**



H63091 **M**



H63092 **M**



H63091S **M**

SIZE	CARTON			PALLET		
	pcs	m ²	kg	ctns	m ²	kg
300mm x 600mm	8	1.44	29.40	72	103.68	2,139.80

H63090 H63091S



H63077

FILO SERIES

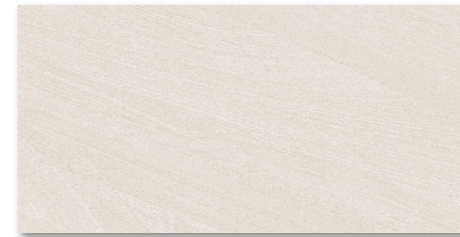
300mm x 600mm **M** Matt Finish, Glazed



H63074 **M**



H63075 **M**



H63076 **M**



H63077 **M**

SIZE	CARTON			PALLET		
	pcs	m ²	kg	ctns	m ²	kg
300mm x 600mm	8	1.44	29.40	72	103.68	2,139.80



MORBIDO SERIES

300mm x 600mm **M** Matt Finish, Glazed



H63061 **M**



H63062 **M**



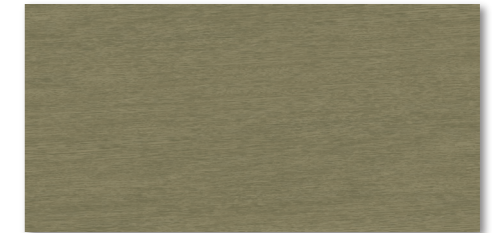
H63063 **M**



H63065 **M**



H63065S **M**



H63066 **M**

SIZE	CARTON			PALLET		
	pcs	m ²	kg	ctns	m ²	kg
300mm x 600mm	8	1.44	29.40	72	103.68	2,139.80



H63635

GOTICCA SERIES

300mm x 600mm **S** Structure Finish, Glazed

-  Porcelain
-  Floor
-  Wall
-  V2 Variation



H63631 **S**



H63632 **S**



H63635 **S**

SIZE	CARTON			PALLET		
	pcs	m ²	kg	ctns	m ²	kg
300mm x 600mm	8	1.44	29.40	72	103.68	2,139.80



H63625 H63627

ALSINEA SERIES

300mm x 600mm **S** Structure Finish, Glazed

-  Porcelain
-  Floor
-  Wall
-  V2 Variation



H63625 **S**



H63626 **S**



H63627 **S**



H63630 **S**

SIZE	CARTON			PALLET		
	pcs	m ²	kg	ctns	m ²	kg
300mm x 600mm	8	1.44	29.40	72	103.68	2,139.80



H63043 H63047

MATERIE SERIES

300mm x 600mm **M** Matt Finish, Glazed



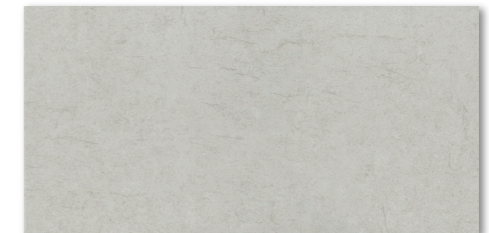
H63043 **M**



H63044 **M**



H63045 **M**



H63046 **M**



H63047 **M**



H63048 **M**

SIZE	CARTON			PALLET		
	pcs	m ²	kg	ctns	m ²	kg
300mm x 600mm	8	1.44	29.40	72	103.68	2,139.80



L63501 HD66001

NORMAL SERIES

30mm x 600mm **MB** Metallic Border, Glazed



L63000 **MB**



L63001 **MB**



L63002 **MB**



L63003 **MB**



L63004 **MB**



L63005 **MB**



L63006 **MB**



L63007 **MB**



L63008 **MB**



L63009 **MB**

20mm x 600mm **MB** Metallic Border, Glazed



L63500 **MB**



L63501 **MB**



L63502 **MB**

SIZE	CARTON			PALLET		
	pcs	m ²	kg	ctns	m ²	kg
30mm x 600mm	40	0.72	15.11	64	46.08	989.04
20mm x 600mm	45	0.54	10.73	64	34.56	708.72

Bene

NOVELA SILTSTONE

PRIMOROSO

Costiero

Novela | Costiero | Primoroso

Bene | Hormigon | Escollo

Siltstone | Calido | Celula | Bosque

Filo | Morbido | Goticca | Alsinea

Materie | Normal

High traffic areas (e.g. common corridors and public areas) as well as exterior parts of the house (e.g. car porch and verandahs) call for more durable tiles that can withstand the pressure of frequent footfalls and heavy objects. In this respect, White Horse porcelain tiles fit the bill perfectly. Coming in a wide array of colours and printed motifs, there are sure to be tiles that will blend well with the immediate surroundings.

CELULA SILTSTONE

calido Bosque

Morbido Castello

MODO GOTICCA

MATERIE Alsinea

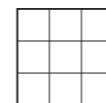
NORMAL

WHITE HORSE TEST REPORTS

DIMENSIONS AND SURFACE QUALITY	PORCELAIN TILES - GROUP BIa		PHYSICAL PROPERTIES	PORCELAIN TILES - GROUP BIa		CHEMICAL PROPERTIES	PORCELAIN TILES - GROUP BIa	
	ISO 13006 Standard	White Horse Tiles (Test Result By SIRIM)		ISO 13006 Standard	White Horse Tiles (Test Result By SIRIM)		ISO 13006 Standard	White Horse Tiles (Test Result By SIRIM)
Length and Width	± 0.6% / ± 2.0mm	Passed	Water Absorption	Maximum 0.5%	Average 0.02% Individual Maximum 0.02%	Chemical Resistance To Household Chemical Of Glazed Tiles	Minimum GB	No Visible Effect (GA)
Thickness	±5% / ± 0.5mm	Passed	Breaking Strength	Not Less Than 1300N	Average 2096N	Chemical Resistance To Swimming Pool Salts Of Glazed Tiles	Minimum GB	No Visible Effect (GA)
Straightness of Sides	± 0.5% / ± 1.5mm	Passed	Modulus of Rupture	Minimum 35N/mm ²	Average 54.8N/mm ² Individual Minimum 51.6N/mm ²	Chemical Resistance To Hydrochloric Acid (3%) Of Glazed Tiles	GLA: No Visible Effect	GLA
Rectangularity	± 0.5% / ± 2.0mm	Passed	Resistance to Deep Abrasion of Unglazed Tiles	Maximum 175mm ³	69mm ³	Chemical Resistance To Citric Acid (100g/l) Of Glazed Tiles	GLB: Definite Change In Appearance	GLA
Flatness of Surface	± 0.5% / ± 2.0mm	Passed	Resistance to Surface Abrasion of Glazed Tiles	Class 3: For Normal Footwear Class 4: For Regular Traffic With Some Scratching Dirt	Class 3	Chemical Resistance To Potassium Hydroxide (30g/l) Of Glazed Tiles	GLC: Partial Or Complete Loss Of The Original Surface	GLA
Centre Curvature	± 0.5% / ± 2.0mm	Passed						
Edge Curvature	± 0.5% / ± 2.0mm	Passed					GLC: Minimum Requirement GLB	
Warpage	± 0.5% / ± 2.0mm	Passed						
Surface Quality	A minimum of 95% free from visible defects	Passed	Crazing Resistance	No Crazing Observed	Passed	Staining Resistance Test Of Glazed Tiles	Minimum Class 3	Class 5 (Stain Can Be Easily Removed With Running Hot Water)

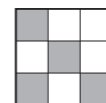
SHADE & TONALITIES

V1 UNIFORM
FROM TILE TO TILE



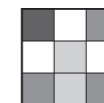
V1
Colour range and tonality within the same shade is fairly uniform from tile to tile.
Minimal to zero difference among tiles from the same production run.

V2 SLIGHTLY NOTICEABLE
FROM TILE TO TILE



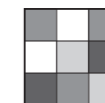
V2
Colour range and tonality within the same shade is slightly noticeable from tile to tile.
Visibly distinguished difference in design or pattern with minimal change in colour tones.

V3 MODERATELY NOTICEABLE
FROM TILE TO TILE



V3
Colour range and tonality within the same shade is moderately noticeable from tile to tile.
Visibly distinguished difference in design or pattern.

V4 DISTINCTLY NOTICEABLE
FROM TILE TO TILE



V4
Colour range and tonality within the same shade is distinctly noticeable from tile to tile.
Random colour differences from tile to tile create the possibility of unique tile compositions.

- The accuracy of colours shown in this brochure is as close as the printing process will allow.
- The appearance of tiles featured in this brochure may differ from the actual items sold.
- The pictures are only illustrative of the tile combinations.
- All tiles are packed in accordance with the standard packing list. For special orders and custom sizes, tile products will be custom-packed based on quality and specification requested.
- White Horse Ceramic Industries Sdn. Bhd. reserves the right to amend the colour range or specifications of tiles at any time without notice.